



Customised MINO Corner

000321998

GENERAL

ceiling/wall
surface
white
IP20
RAL 9010^a

LED

3000K/4000K
CRI \geq 80
L80/50000h
initial \leq 3 MacAdam

OPTICAL

opal high performance

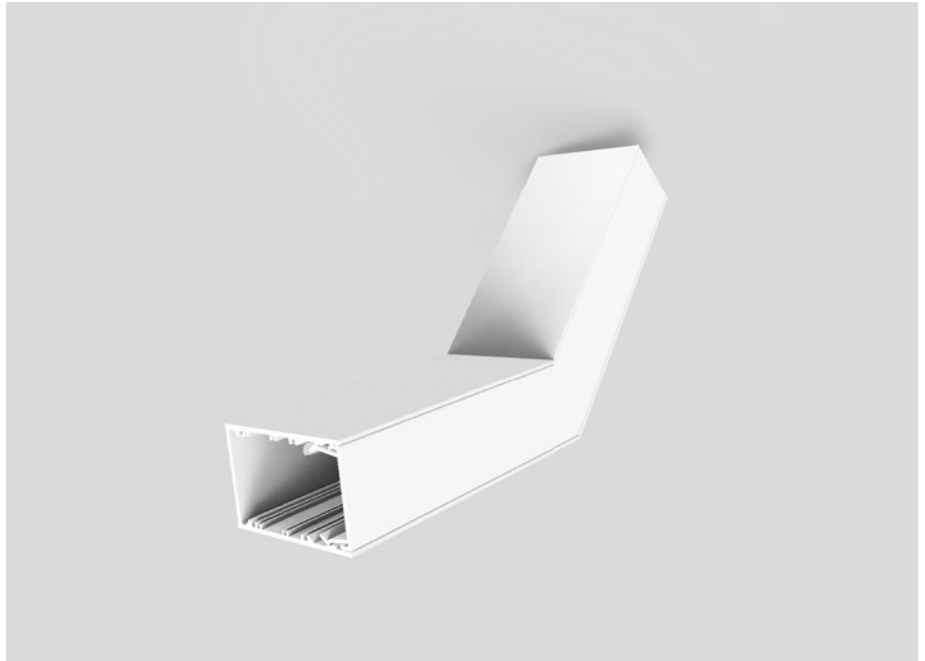
DIMENSIONS

length 150 x 150 mm / 135°
width 42 mm
height 64 mm

ELECTRICAL

non DIM, DIM DALI
PC1 220-240 V

^aRAL Palette colours may deviate slightly due to production conditions



Luminaire housing made of extruded aluminium profile; 135° housing construction angle (available in additional 15° increments); no visible screws; angular design; for continuous lighting systems; surface white powder coated; suitable for wall or ceiling mounting; LED light inset incl. heat sink exchangeable; light colour 3000K or 4000K; Binning initial \leq 3 MacAdam; CRI \geq 80; min. 80% of luminous flux after 50000 operating hours; energy efficient LEDs with high CRI; HPO (High Performance Opal) cover for uniform illumination; due to special material composition with increased transmission and diffusion; + 15% luminous efficiency compared to standard opal covers; degree of protection IP20; PC1 220-240 V; optionally DALI dimmable or non-dimmable

